

## Key Learning

The Ancient Egyptian civilisation lasted from approximately 3000BC until 33AD.

The Ancient Egyptians relied heavily on the River Nile for farming, trade and many other aspects of life.

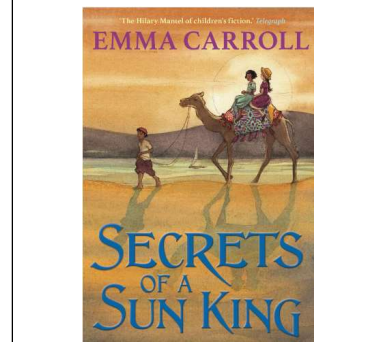
Ancient Egyptians mummified the bodies of important people to help them in the afterlife.

Tutankhamun was an Egyptian Pharaoh who's remains were found by archaeologists in 1922.

The Ancient Egyptians believed in a lot of different gods who they believed would guide them through life and the afterlife.

## Year 3 – What was it like to be an ancient Egyptian?

### Exciting Reads



### Subject Specific Vocabulary

<b>Pharaoh</b>	The supreme ruler of all of Ancient Egypt. He or she was considered a god.
<b>Mummy</b>	A dead body that has been specially preserved using embalming so that it won't rot.
<b>Hieroglyphics</b>	A type of writing used by the Ancient Egyptians that used a combination of pictures and symbols.
<b>Cartouche</b>	A carved tablet or drawing representing a scroll with rolled-up ends, used ornamentally or bearing an inscription.
<b>Sphinx</b>	A mythological beast with the body of a lion and the head of a pharaoh or god. The Egyptians built sphinx statues to guard tombs.
<b>Sarcophagus</b>	A large stone box that held a mummy's coffin.
<b>Rosetta stone.</b>	A special stone that had the same inscription written both in Greek and in Egyptian hieroglyphics. It was very helpful in translating and understanding hieroglyphics
<b>Canopic jars -</b>	Special jars that held the organs of a mummy including the lungs, intestines, liver, and stomach.
<b>Egyptologist</b>	An archaeologist who specializes in Ancient Egypt.

### Timeline

6000BC	5000BC	4500BC	3500BC	3000BC	2500BC	1500BC	1325BC	332BC
People settled in the Nile Valley and used clay and silt from the river to make pottery.	Many Egyptians farmed sheep and cattle and grew wheat and barley on the fertile land on the Nile valley.	Sails were used on Egyptian ships for the first time. Boats were the main form of transport in Ancient Egypt.	Craftsmen began to create the first wall paintings using hieroglyphic symbols in the Egyptian system.	Walled towns and villages were built in Egypt. The first buildings were made of mud brick.	Egyptians built the Great Sphinx and the Great Pyramid at Giza. 2500BC to 2000BC was the 'Old Kingdom' period.	Many of the royal tombs were built in the Valley of the Kings. The period of the 'New Kingdom'.	Around 1325BC, King Tutankhamun buried in the Valley of the Kings.	Egypt was invaded by Alexander the Great and was then ruled by the Greek King. The era of the New Kingdom ends.